

Charlotte State Forest - General Map

Charlotte County - 5,688 Acres



Legend

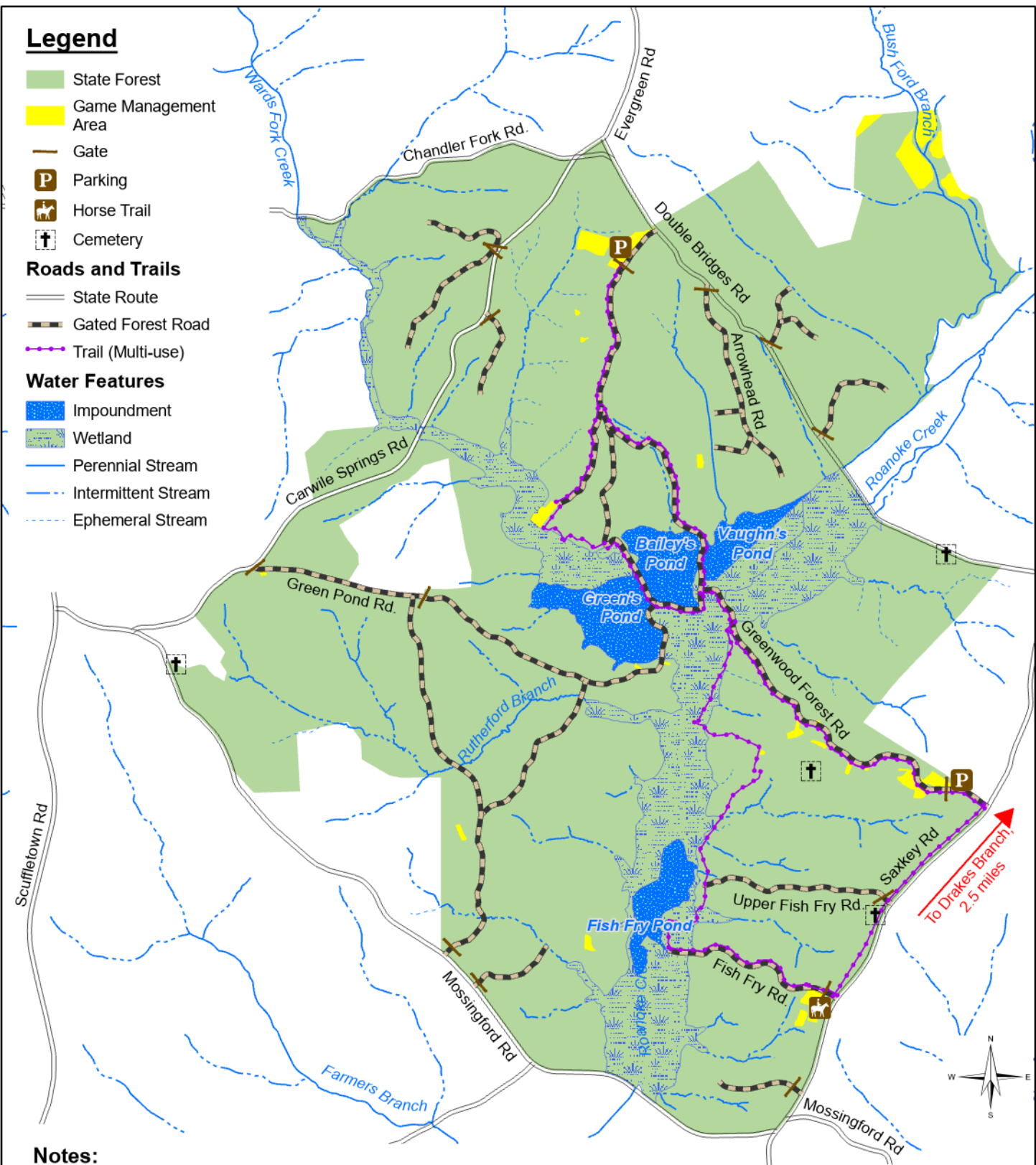
- State Forest
- Game Management Area
- Gate
- Parking
- Horse Trail
- Cemetery

Roads and Trails

- State Route
- Gated Forest Road
- Trail (Multi-use)

Water Features

- Impoundment
- Wetland
- Perennial Stream
- Intermittent Stream
- Ephemeral Stream



Notes:

- All-terrain vehicles prohibited on state forests.
- State forest boundaries are marked with a horizontal yellow bar.
- Vehicles prohibited on gated roads - foot travel only.
- Horses should have proof of a negative Coggins test.

0 0.25 0.5 1 Miles

Lat: 36° 59' 06", Long: -78° 37' 43"

kw, 8/14/2023