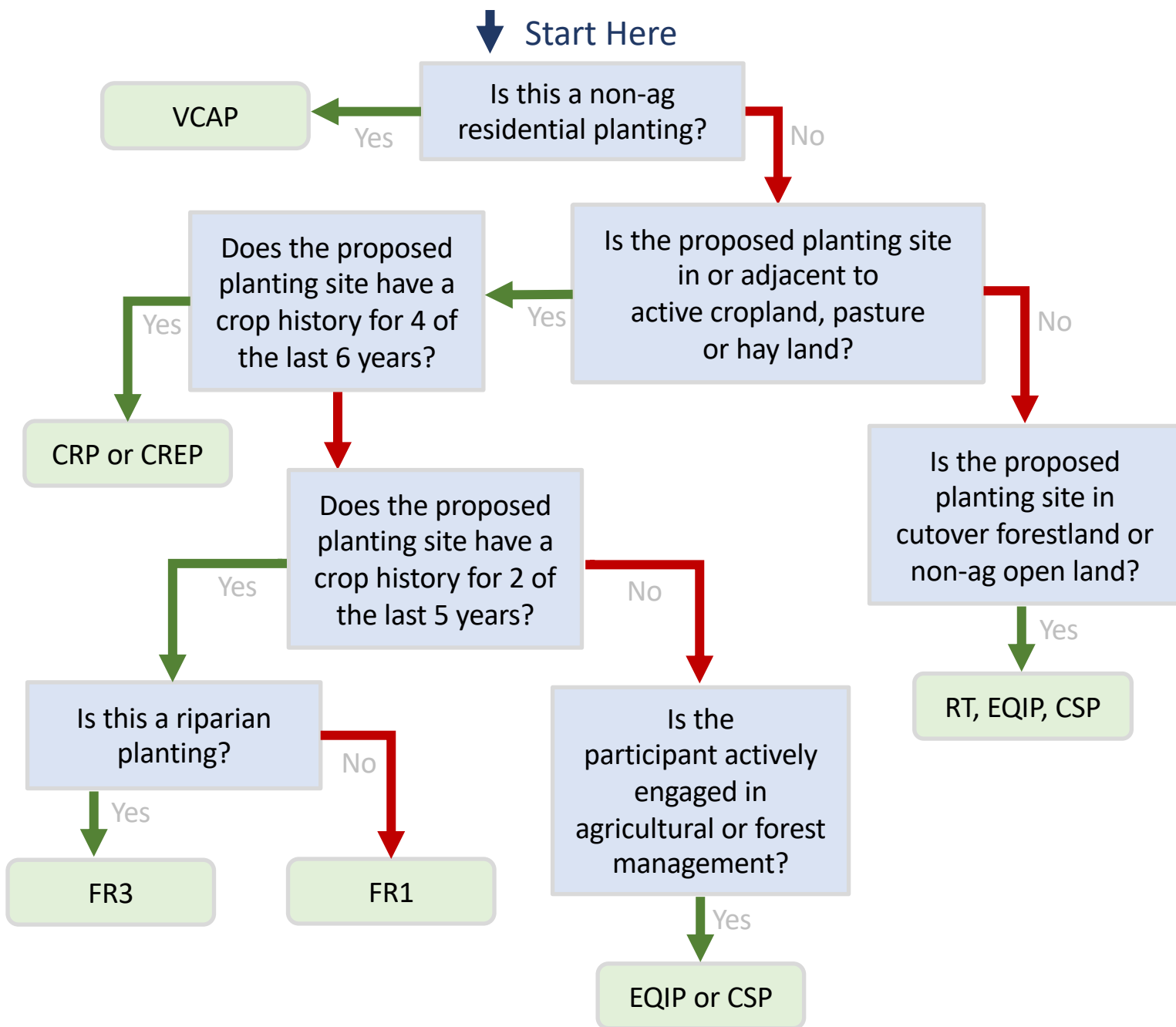


Cost-Share Flow Chart for Riparian and Open Field Planting



Note: All programs except FR1 can be used for riparian plantings.

08/03/2023

Virginia Department of Forestry (DOF)
RT (Reforestation of Timberlands)

Farm Service Agency (FSA)
CRP (Conservation Reserve Program)
CREP (Conservation Reserve Enhancement Program)

Soil and Water Conservation District (SWCD)
FR1 (Afforestation of Crop, Hay and Pasture Land)
FR3 (Woodland Buffer Filter Area)
VCAP (Virginia Conservation Assistance Program)

Natural Resource Conservation Service (NRCS)
CSP (Conservation Stewardship Program)
EQIP (Environmental Quality Incentives Program)



Riparian Forest Buffer Cost-Share Programs

Cost-Share Programs	
Program	Administering Agency
Reforestation of Timberlands (RT)	Virginia Department of Forestry (DOF)
Afforestation of Crop, Hay and Pasture Land (FR1)	Soil and Water Conservation District (SWCD)
Woodland Buffer Filter Area (FR3)	Soil and Water Conservation District (SWCD)
Virginia Conservation Assistance Program (VCAP)	Soil and Water Conservation District (SWCD)
Conservation Reserve Program (CRP)	Farm Service Agency (FSA)
Conservation Reserve Enhancement Program (CREP)	Farm Service Agency (FSA)
Conservation Stewardship Program (CSP)	Natural Resource Conservation Service (NRCS)
Environmental Quality Incentives Program (EQIP)	Natural Resource Conservation Service (NRCS)

Cost-Share Program Overview						
CREP	EQIP	CSP	RT	VCAP	FR3	FR1
Funding Amount						
Rental payment + incentive. Each element of the project (e.g., fencing, water troughs, trees, shelters, etc.) receives up to 50% of the practice up to the funding cap. Additional funding provided by SWCDs; amount varies annually.	Variable fixed rate per acre by practice. Covers seedlings, labor, site prep, brush management, invasive control, timber stand improvement and additional conservation practices. Up to \$450,000 each Farm Bill period. Bundling multiple practices increases overall payment.	Payment to maintain existing practices and implement additional practices. Bundling multiple practices increases overall payment.	Variable cost-share rate based on Board of Forestry. Pine only. Covers site prep, release, planting and seedlings. Funding maximum is 75% of the cost or set practice rate, whichever is the lowest.	75% of the total cost up to a cap set by the district. Covers seedlings, materials and labor.	95% of the total cost of seedlings, site prep, labor, ground cover and fencing up to a cap set by the district. Maintenance incentive: Conifer \$100–10 year \$150–15 year Hardwood \$100–10 years \$250–15 years 25% tax credit on extra expenses.	75% of the total cost of seedlings, site prep, labor, ground cover and fencing up to a cap set by the district. Maintenance incentive: \$100–10 years \$150–15 years 25% tax credit on extra expenses.
Planting Type						
Riparian	Upland or Riparian	Upland or Riparian	Upland, Riparian or Plantation	Residential: Upland or Riparian	Riparian	Upland

Cost-Share Program Overview						
CREP	EQIP	CSP	RT	VCAP	FR3	FR1
Administering Agency						
Farm Service Agency (FSA)	Natural Resources Conservation Service (NRCS)	NRCS	Virginia Department of Forestry (DOF)	Soil and Water Conservation Districts (SWCD)	SWCD	SWCD
Acreage Requirements						
Buffer must be 35-300 ft. wide.	Larger acreages are more likely to acquire funding.	Larger acreages are more likely to acquire funding.	Minimum of 5 acres and maximum of 100 acres per landowner.	No minimum or maximum acreage.	Buffer must be 35-100 ft. wide.	No minimum or maximum acreage.
Land Use Requirements						
Land must have been in marginal pastureland use for 4 of the past 6 years.	Land must be in crop, range, pasture, farm, agricultural adjacent or private forest use.	Agricultural land, forestland, farmstead, and associated agricultural land.	N/A	Structures present must have been on the property for 3+ years. Must have active erosion concerns.	Land must have been in crop, hay or pasture for 2 of the past 5 years. Minimum of 5 acres agricultural land, a minimum of \$1000 per year agricultural product for last 3 years.	Land must have been in Crop, Hay, or Pasture for 2 of the past 5 years. Minimum of 5 acres agricultural land, a minimum of \$1000 per year agricultural product for last 3 years.
Limiting Factors						
Low rental payment. Low cost-share rate. Only riparian areas.	Single annual review. Competitive statewide funding process.	Must have existing conservation practices in place. The entire operation must be enrolled.	Payment varies based on tree species and site prep method.	Requires active erosion concerns and erosion measurement to qualify.	No coverage for new invasive maintenance, advanced site prep or larger issues.	No coverage for new invasive maintenance, advanced site prep or larger issues.