

Cumberland State Forest - Hunting Map

Cumberland County - 16,154 Acres



Legend

- State Forest
- State Park
- Game Management Area
- No Hunting/Safety Zone

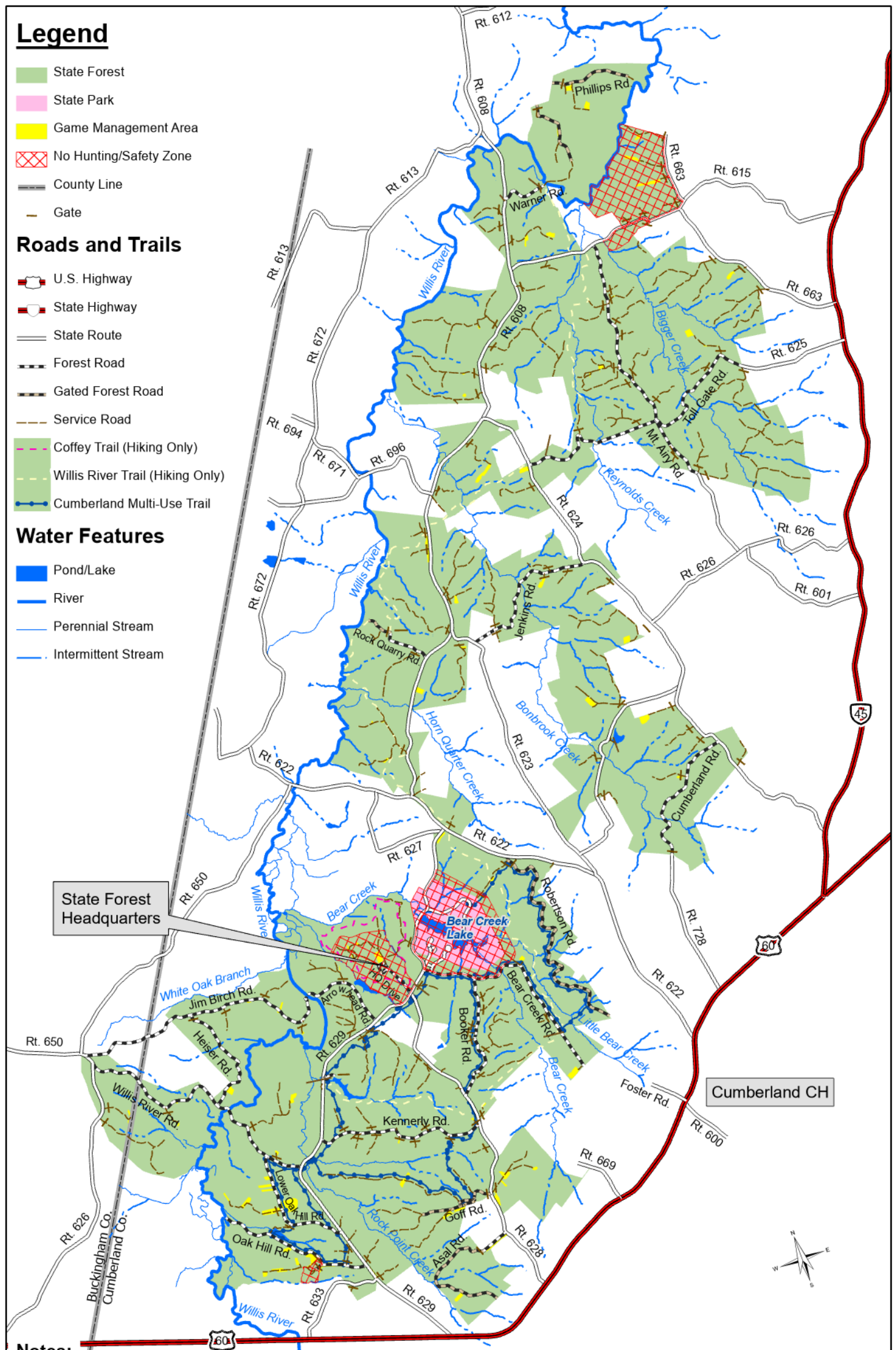
- County Line
- Gate

Roads and Trails

- U.S. Highway
- State Highway
- State Route
- Forest Road
- Gated Forest Road
- Service Road
- Coffey Trail (Hiking Only)
- Willis River Trail (Hiking Only)
- Cumberland Multi-Use Trail

Water Features

- Pond/Lake
- River
- Perennial Stream
- Intermittent Stream



Notes:

- All-terrain vehicles prohibited on state forests.
- State forest boundaries are marked with a horizontal yellow bar.
- Vehicles prohibited on gated roads - foot travel only.
- DWR hunting regulations for Cumberland/Buckingham County apply.
- Virginia State Forest Use Permit and Hunting License required.
- Always wear blaze orange.



Lat: 37° 31' 38.5", Long: -78° 17' 07.3"