

Sandy Point State Forest - Hunting Map

King William County - 2,074 acres



Legend

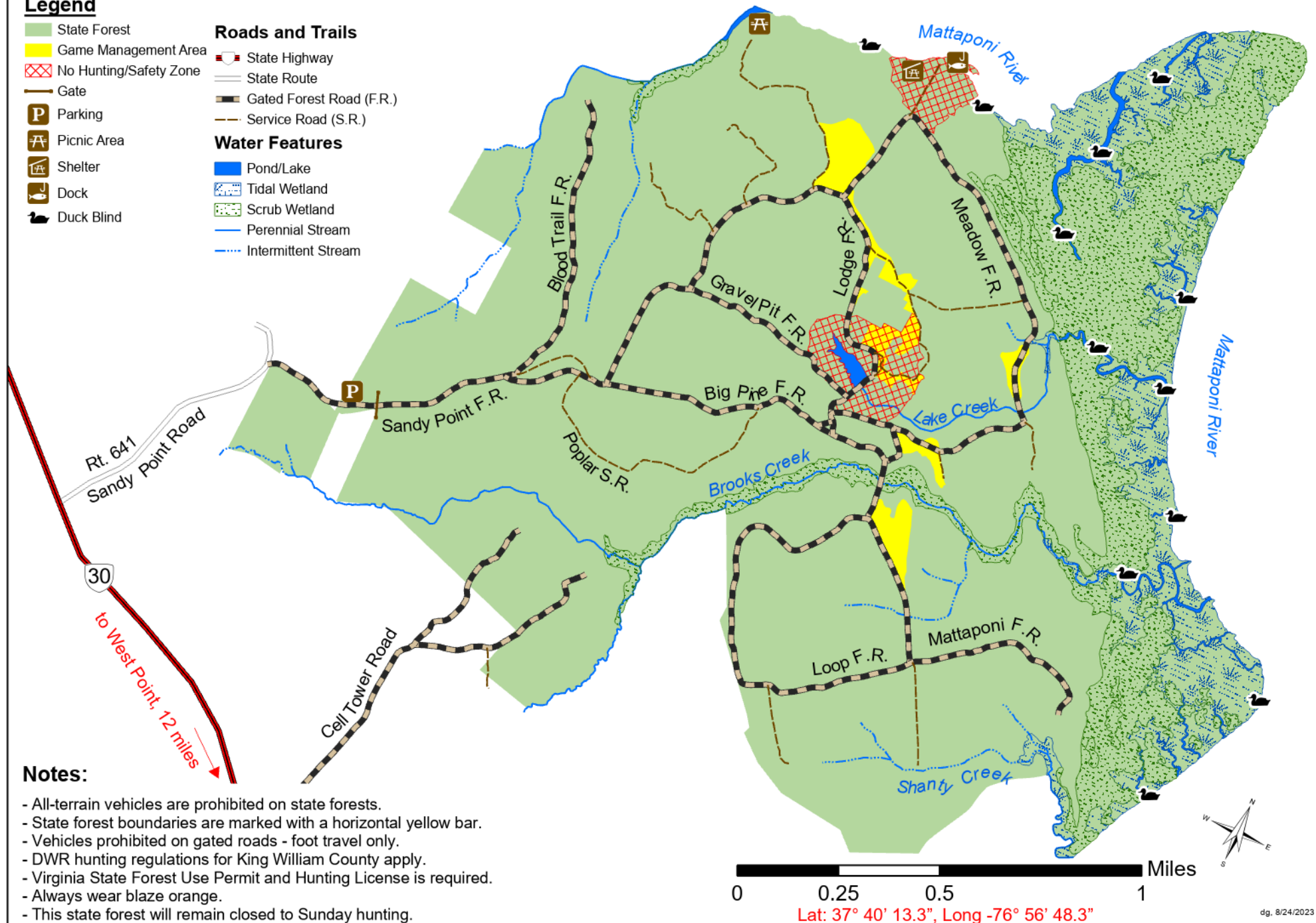
- State Forest
- Game Management Area
- No Hunting/Safety Zone
- Gate
- P Parking
- A Picnic Area
- T Shelter
- D Dock
- B Duck Blind

Roads and Trails

- State Highway
- State Route
- Gated Forest Road (F.R.)
- Service Road (S.R.)

Water Features

- Pond/Lake
- Tidal Wetland
- Scrub Wetland
- Perennial Stream
- Intermittent Stream



Notes:

- All-terrain vehicles are prohibited on state forests.
- State forest boundaries are marked with a horizontal yellow bar.
- Vehicles prohibited on gated roads - foot travel only.
- DWR hunting regulations for King William County apply.
- Virginia State Forest Use Permit and Hunting License is required.
- Always wear blaze orange.
- This state forest will remain closed to Sunday hunting.

Lat: 37° 40' 13.3", Long -76° 56' 48.3"